



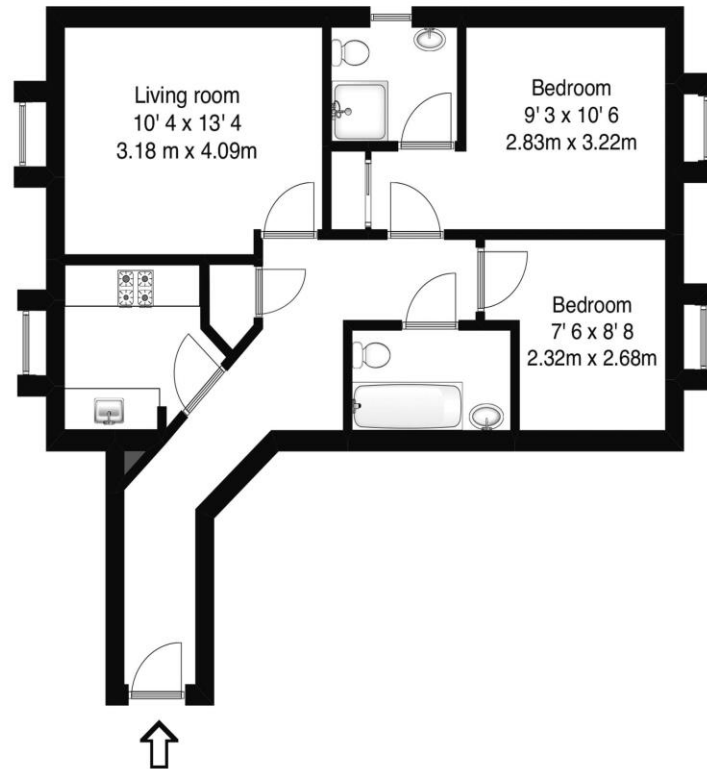
**11 Strata Court Bridge Street Walton-On-Thames Surrey KT12 1AS**

**£1550pcm + Initial deposit**



Approximate gross internal floor area 753 Sq Ft 70 Sq M

Second floor



Whilst every attempt has been made to ensure the accuracy of the floor plan contained here, measurements are approximate and no responsibility is taken for any error, omission, or mis-statement. The plan is for illustrative purposes only and should be used as such by any prospective purchaser.

A top floor, two bedroom modern apartment offered to rent in central Walton on Thames. The property consists of a living room and separate fitted kitchen, two double bedrooms with the main having fitted wardrobes and an en-suite, and a further bathroom. Benefits of the block include an allocated parking space, a secure entry system and a lift. Well-located for the town centre shops and restaurants and within walking distance of the River Thames.

Available from 20th April 2024. EPC Rating C



**AGENTS NOTES:** These details do not constitute any part of an offer or contract. In issuing them we do not have any authority to give any warranty or representation whatsoever in respect of this property. These details are provided without any responsibility on our part or the part of the vendors. No statements in these details are to be relied upon as representations of fact and purchasers should satisfy themselves by inspection or otherwise as to the accuracy of the statements contained therein.

**Equipment:** We have not tested the equipment or central heating system mentioned in these particulars and purchasers are advised to satisfy themselves as to their working order and condition.

**Measurements:** Great care is taken when measuring but measurements should not be relied upon for ordering carpets, equipment, etc.